

## Water-Cooled Chillers with Scroll Compressors - Standard version -

**WHZ 024.2 ÷ 047.2 ST**

**Cooling capacity from 84 to 165 kW**

**Refrigerant R 407C / 400 V – 3 ph – 50 Hz**



- Self-supporting unit structure for indoor installation
- Single or tandem scroll compressors
- Direct expansion shell-and-tube evaporator
- 2-pass shell-and-tube condenser
- Ecological refrigerant R 407C
- Thermostatic expansion valve
- Electrical control panel with main switch
- Electronic unit control



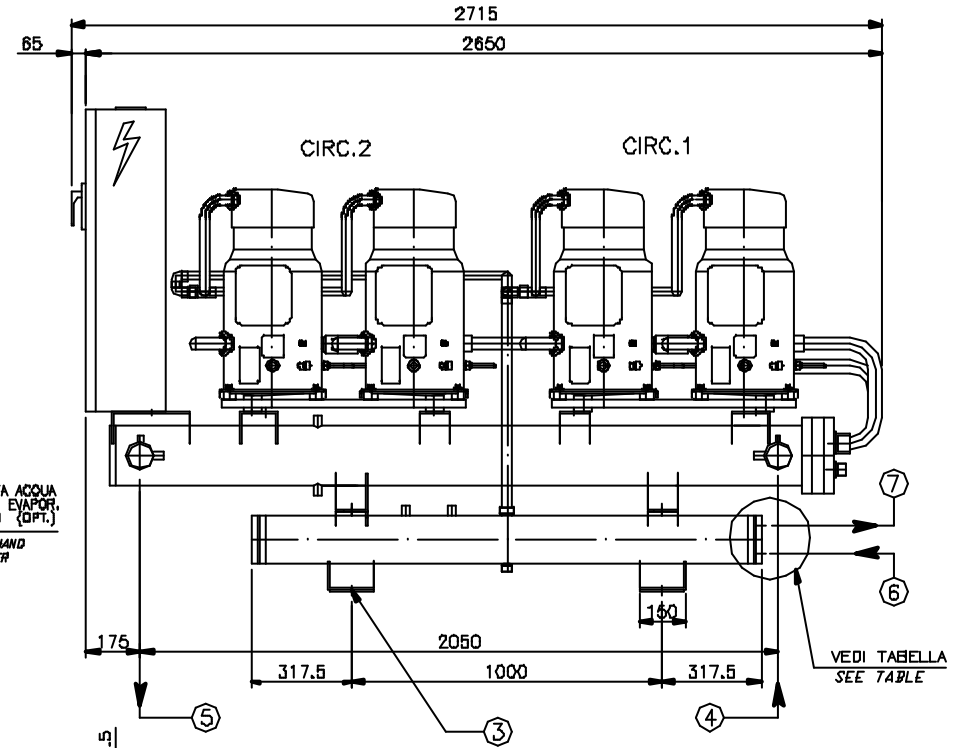
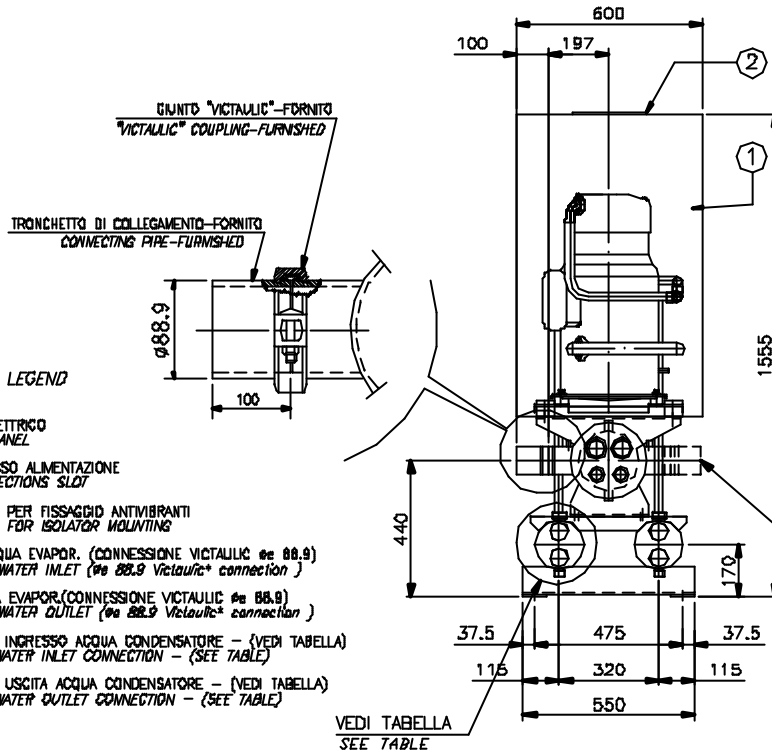
WHZ	Cooling capacity (1)	Absorbed power (1)	Max. unit current (2)	Compressors/ Refrigerant circuits	Capa- city steps	Unit dimensions (L x W x H) (3)	Operating weight (3)	Sound pressure	
								without soundproof cabinet (4)	with soundproof cabinet (4)
Unit size	[kW]	[kW]	[A]	No.	No.	[mm]	[kg]	[dB(A)]	[dB(A)]
024.2	84.6	22.1	70	2 Single/2	2	1838 x 600 x 1555	560	77.0	74.0
032.2	108.9	28.2	100	2 Tandem/2	4	2715 x 600 x 1555	900	78.0	75.0
041.2	142.5	37.5	140	2 Tandem/2	4	2715 x 600 x 1555	900	78.0	75.0
047.2	165.7	45.6	140	2 Tandem/2	4	2715 x 600 x 1555	900	78.0	75.0

We reserve the right to make changes in design and construction at any time without notice.

- Notes:** (1) Performance data based on 12/7 °C entering/leaving evaporator water temperature and 30/35 °C entering/leaving condenser water temperature  
 (2) Unit current at the max. allowed operating conditions  
 (3) Unit dimensions and operating weight referred to chiller with standard 2-pass condenser and without soundproof cabinet  
 (4) Sound pressure level at **1 m distance** in semispheric free field conditions according to ISO 3744

### Options and accessories:

- Total heat recovery
- Brine version
- Phase monitor
- Evaporator heater
- Evaporator and condenser flow switches
- Rubber-type antivibration mounts
- Soundproof cabinet



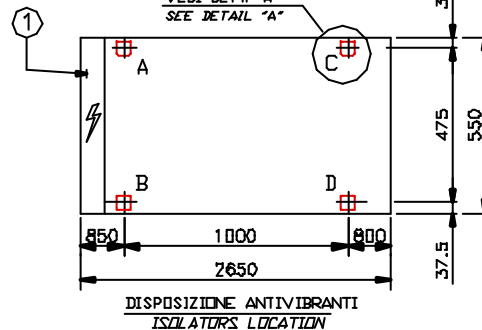
LEGENDA - LEGEND

- 1- PANNELLO ELETTRICO  
ELECTRICAL PANEL
- 2- ASOLA INGRESSO ALIMENTAZIONE  
POWER CONNECTIONS SLOT
- 3- N.4 FORI #16 PER FISSAGGIO ANTIVIBRANTI  
4 HOLES #16 FOR ISOLATOR MOUNTING
- 4- INGRESSO ACQUA EVAPOR. (CONNESSIONE VICTALIC Ø88,9)  
EVAPORATOR WATER INLET (Ø88.9 Victallic<sup>®</sup> connection)
- 5- USCITA ACQUA EVAPOR.(CONNESSIONE VICTALIC Ø88,9)  
EVAPORATOR WATER OULET (Ø88.9 Victallic<sup>®</sup> connection)
- 6- CONNESSIONE INGRESSO ACQUA CONDENSATORE - (VEDI TABELLA)  
CONDENSER WATER INLET CONNECTION - (SEE TABLE)
- 7- CONNESSIONE USCITA ACQUA CONDENSATORE - (VEDI TABELLA)  
CONDENSER WATER OULET CONNECTION - (SEE TABLE)

VEDI TABELLA  
SEE TABLE

VEDI DETT. "A"  
SEE DETAIL "A"

MODELLO MODELL	CONNESSIONI ACQUA CONDENSATORE CONDENSER WATER CONNECTION
1 PASSO	3" GAS
2 PASSI	2" GAS
4 PASSI	1"1/4 GAS



DISPOSIZIONE ANTIVIBRANTI  
ISOLATORS LOCATION

UNITA' UNIT	PESO UNITA' UNIT WEIGHT		CARICHI ANTIVIBRANTI ISOLATORS LOAD (Kg)			
	SPEDIZ. SHIPPING	OPERAZIONE OPERATING	A	B	C	D
WHZ 032.2						
041.2	880	900	235	235	215	215
047.2						

